

A still life composition of spa products on a dark wooden surface against a vertical wood-grain background. On the left, a stack of towels includes a large white one and two grey ones. In the center, a lit white candle stands behind a glass bottle of amber oil with a cork stopper. To its right is another lit candle, followed by two more glass bottles of oil with cork stoppers. In the foreground, a dark stone mortar is filled with coarse salt crystals, with some spilled onto the wooden surface. To the right of the mortar, several smooth, dark grey stones are stacked. The overall lighting is warm and soft, creating a relaxing atmosphere.

PXIER SPA

CLOUD BASED SPA MANAGEMENT TOOL.



Onboarding Process (Part I)

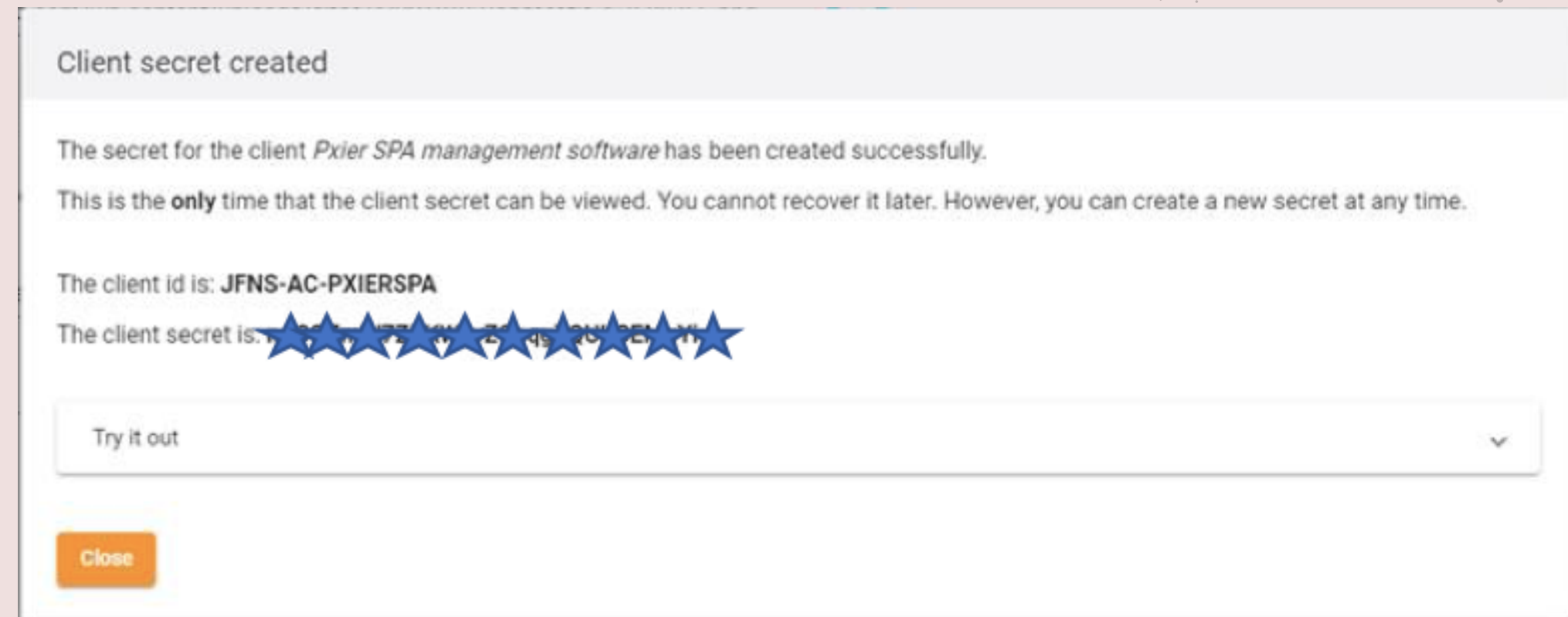
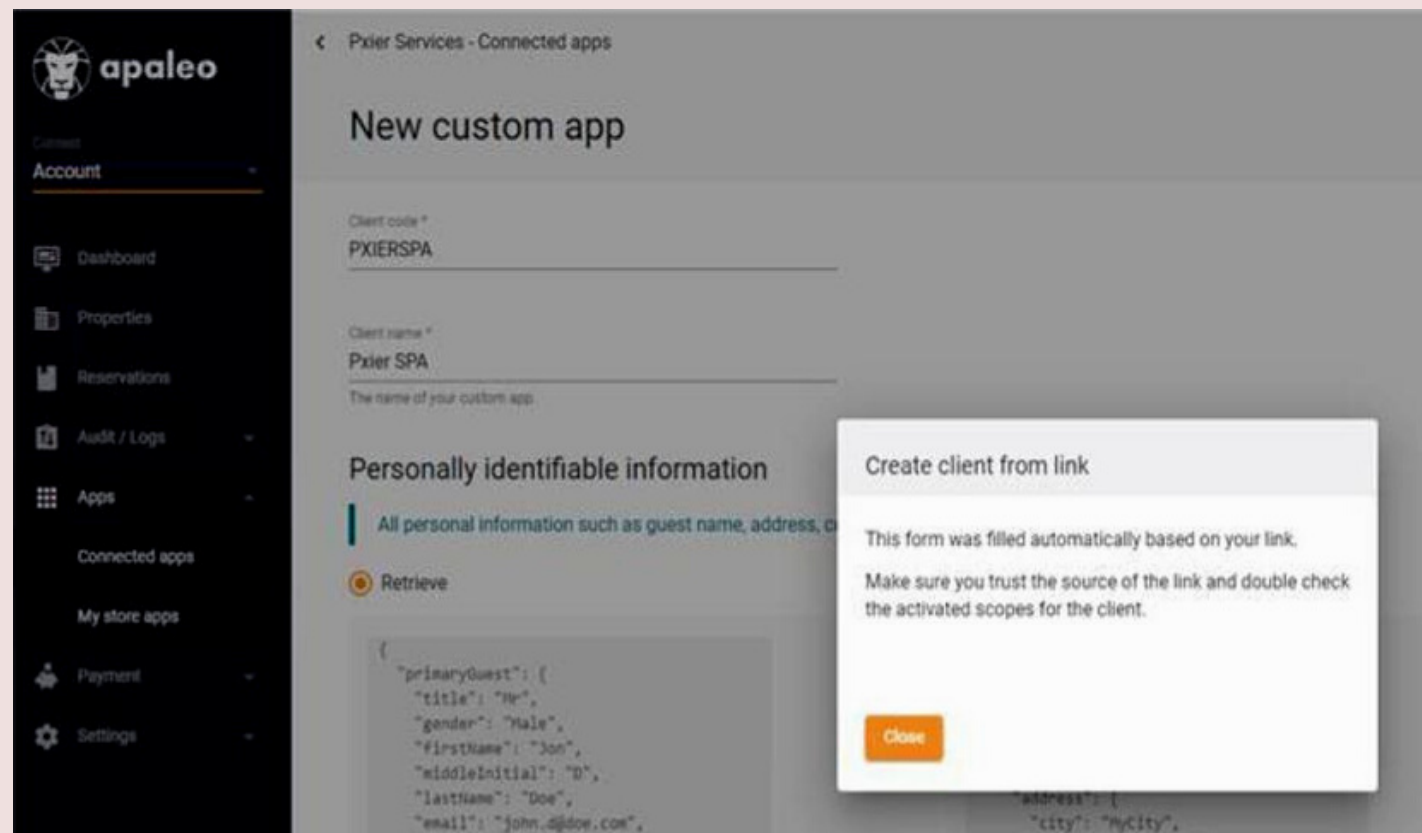


PXIER AND APALEO HAS WORKED TOGETHER TO SIMPLIFY THE ONBOARDING PROCESS, ENSURING YOU ARE ABLE TO QUICKLY INTEGRATE YOUR SYSTEMS.

Steps

1. Pxier will generate a unique URL link, this will be sent to you via email. While you are logged in to your apaleo Account, click on the link.
2. You will see a pop-up message "Create client from Link" see screenshot below:

3. Close the message, then scroll to the bottom of the page and click on save.
4. After saving, you will get a pop-up message containing the Client ID and Secret. Please ensure these details are only shared using a secure channel.
5. Please save these credentials, as they are required to connect your Pxier Account. See screenshot below





Onboarding Process (Part II)

NOW THAT YOU HAVE CREATED THE INTEGRATION IN APALEO, YOU WILL NEED TO ALLOW PXIER ACCESS TO YOUR ACCOUNT. ALL YOU REQUIRE IS THE CREDENTIALS SAVED FROM PART I.



Steps

1. Login to the Pxier Spa using the login credentials you received via email.
2. In the Menu Options, click on Integrations. You will see an Option for apaleo.
3. Click on apaleo, you will then need to input the Client ID and Secret you saved from Part I. Please ensure these credentials are secured
4. Click Save - You are now connected to apaleo.

Apaleo API Integration

* Property ID :

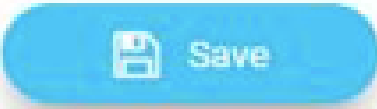
* Client ID :

* API Secret :

* Sync Gift Certificate Revenue : ▼

* Sync Package Revenue : ▼

* Accounting Group - GC : ▼

 Save